



DIGITLINE



Solutii avansate pentru testarea si diagnoza masinilor industriale

DIGITLINE

- 15 ani de activitate in domeniul procesarii numerice a semnalelor
- Solutii de inalta acuratete pentru analiza sunetelor, vibratiilor si parametrilor electrici
- Integrator National Instruments

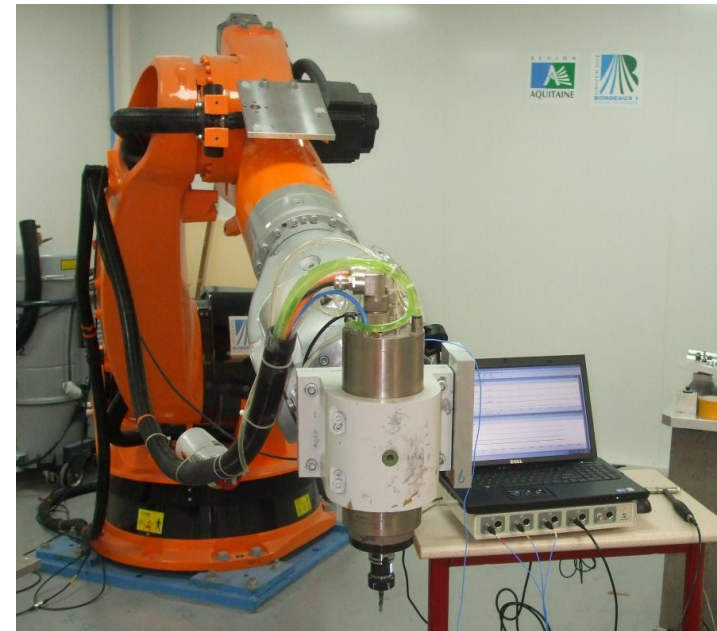
DSA 550

5 channels absolute & relative vibration analyzer



Aplicatii

- Analiza vibratiilor absolute cu accelerometre
- Analiza vibratiilor relative cu proximitoare sau senzori laser
- Masuratori dimensionale fara contact
- Masurarea turatiei
- Echilibrarea rotoarelor



Diagnoza robotilor la Universitatea din Bordeaux

VPA 323

**32 channels power, vibration
and process parameters analyzer**

Aplicatii

- Evaluarea performantelor si duratei de viata a centralelor hidroelectrice
- Echilibrarea dinamica si centrarea magnetica a rotoarelor
- Optimizarea reglajelor functionale si cresterea randamentului
- Analiza calitatii energiei electrice
- Diagnoza



Teste de performanta la hidrocentrale

ROTORVIEW 110

11 channels wireless
rotor monitoring system

Aplicatii

- Testarea masinilor electrice de mare putere in bancurile de proba
- Supravegherea si monitorizarea completa a grupurilor hidroelectrice
- Eliminarea sistemelor clasice de monitorizare bazate pe perii colectoare
- Diagnoza avansata

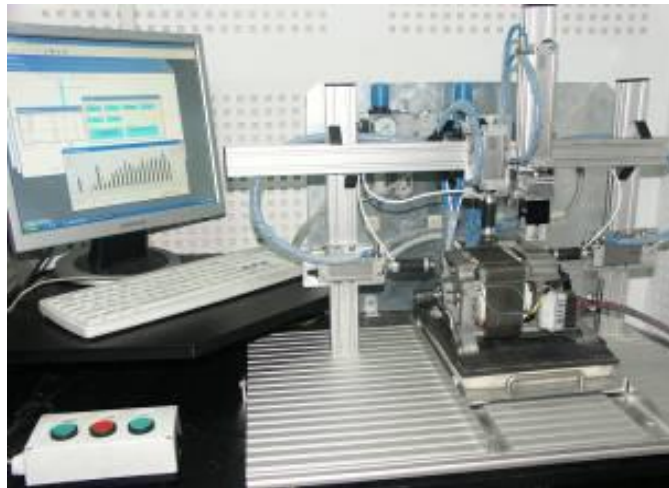


Testarea hidrogeneratoarelor

Testing Station for Electrical Machines

Aplicatii

- Testarea si diagnoza pe liniile de fabricatie a motoarelor de curent continuu sau de curent alternativ, monofazate sau trifazate
- Masuratori bazate pe Transformata Fourier pentru parametrii electrici, zgomote si vibratii



Testarea pe liniile de fabricatie a motoarelor electrice

Remote monitoring and diagnosis equipment

Aplicatii

- Monitorizarea si supravegherea locala a masinilor industriale prin masurarea complexa a parametrilor vibratiilor
- Diagnoza la distanta prin analiza formelor de unda si spectrelor de frecventa



Monitorizarea de la distanta a instalatiilor de vidare din industria metalurgica

Gearing monitoring and diagnosis equipment

Aplicatii

- Teste de laborator
- Supraveghere locala
- Monitorizare si diagnoza de la distanta



Monitorizarea si diagnoza de la distanta a reductoarelor excavatoarelor de mare putere

acquisition, analysis and diagnostic software

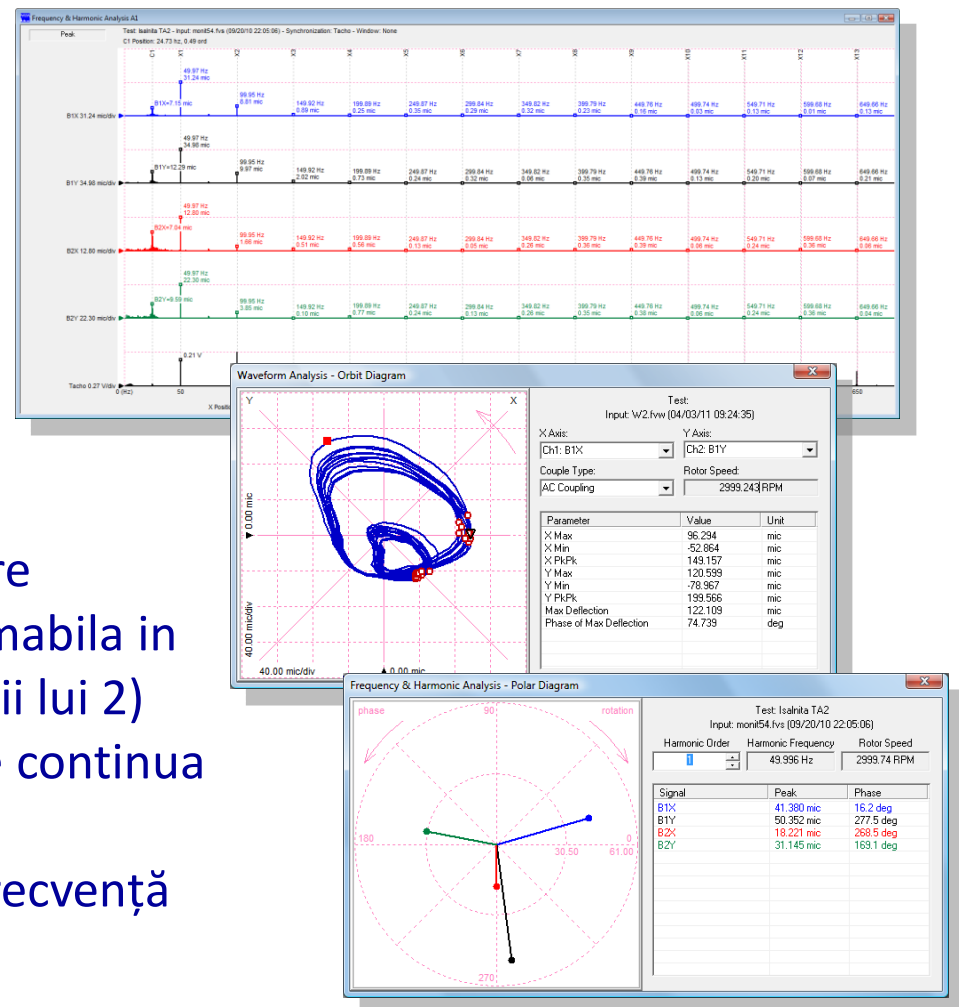
-
- The image displays a collage of five overlapping screenshots from the 'Control WinCC' software interface, illustrating various vibration analysis plots and application windows.
- Top Screenshot:** Shows a 'Test Run' status bar at the top. The main plot displays 'Torque' (0.0 to 1.0 V) and 'Vibration' (0.0 to 1.0 V) signals. The 'Control WinCC' application window shows a helicopter image.
- Second Screenshot:** Shows a 'Test Run' status bar. The main plot displays 'Vibration' (0.0 to 1.0 V) and 'Temperature' (0.0 to 1.0 V) signals. The 'Control WinCC' application window shows a wind turbine image.
- Third Screenshot:** Shows a 'Test Run' status bar. The main plot displays 'Acceleration' (0.0 to 1.0 V) and 'Vibration' (0.0 to 1.0 V) signals. The 'Control WinCC' application window shows a bearing image.
- Bottom Screenshot:** Shows a 'Test Run' status bar. The main plot displays 'Torque' (0.0 to 1.0 V) and 'Vibration' (0.0 to 1.0 V) signals. The 'Control WinCC' application window shows a dam image.
- The interface includes a 'Test Run' status bar at the top of each window, indicating the current state of the test. The plots show various signals (Torque, Vibration, Temperature, Acceleration) over time, with corresponding application windows displaying relevant images (Helicopter, Wind Turbine, Bearing, Dam).

www.digitline.ro

FASTVIEW

acquisition, analysis
and diagnostic software

- Transformata Fourier Rapida de mare rezolutie, buffer de lungime programabila in mod continuu (fara restrictiile puterii lui 2)
- Analiza armonica sincrona, rezolutie continua in frecventa si ordin
- Analiza spectrala a semnalelor cu frecvență variabilă, functii run-up si run-down

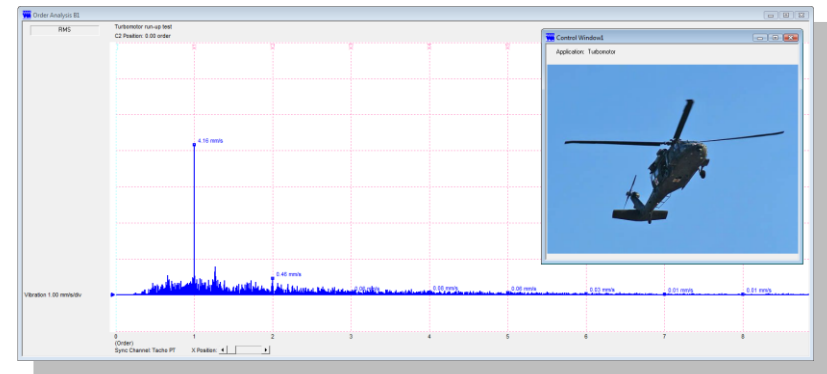
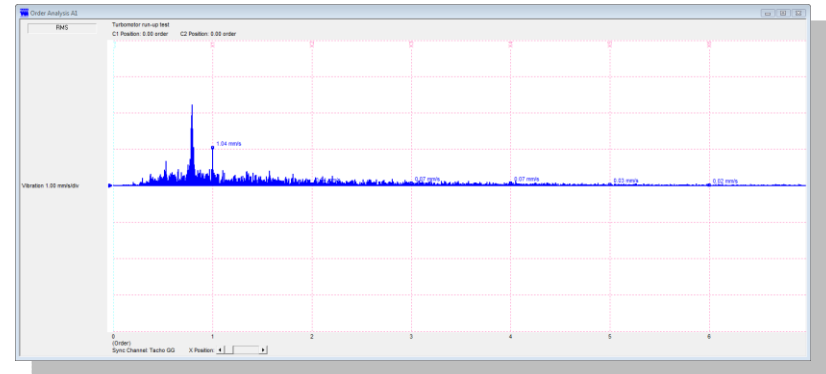


*Functii specifice pentru diagnoza
lagarelor cu ungere*

FASTVIEW

acquisition, analysis
and diagnostic software

- Optiuni multiple de prelucrare a semnalelor tacho si de sincronizare a masuratorilor, extragerea informatiei de turatie din semnalul de vibratii
- Identificare și urmărire armonice cu mai multe referințe (multi-axis order tracking)

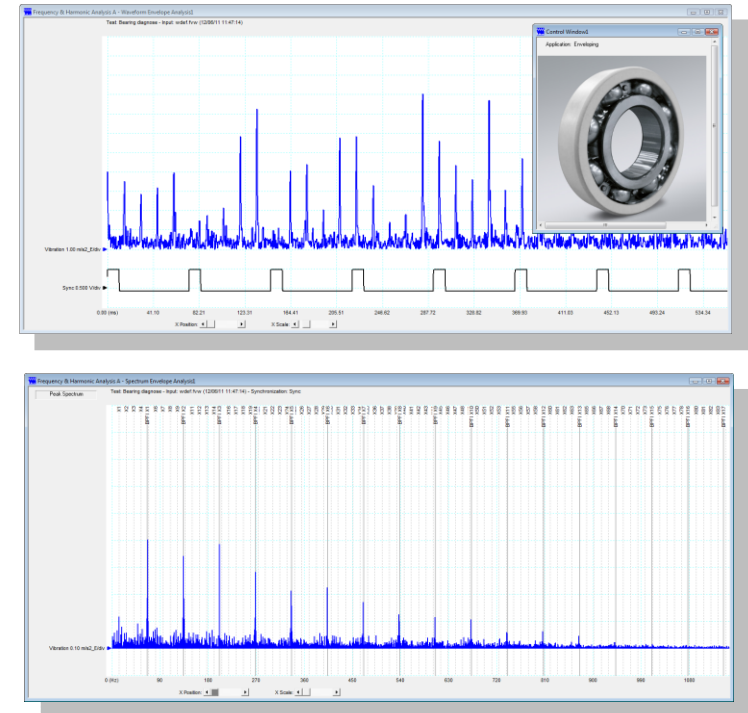


*Testarea si diagnoza motoarelor cu
mai multe rotoare*

FASTVIEW

acquisition, analysis
and diagnostic software

- Echilibrare statica, static-cuplu si dinamica prin metoda coeficientilor de influenta, echilibrare fara masurarea turatiei si fazei prin metoda celor patru porniri
- Functii specifice pentru testarea si diagnoza paletelor, rulmentilor si reductoarelor

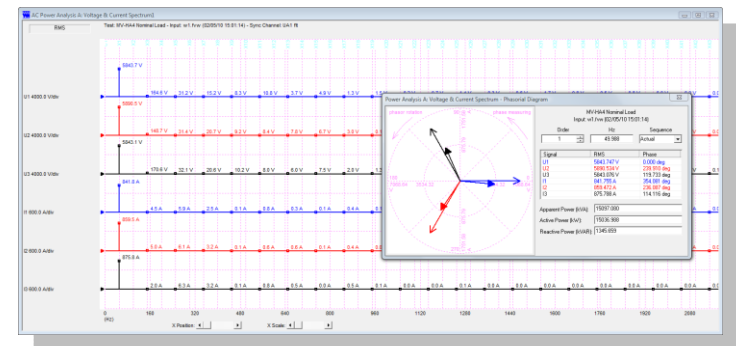
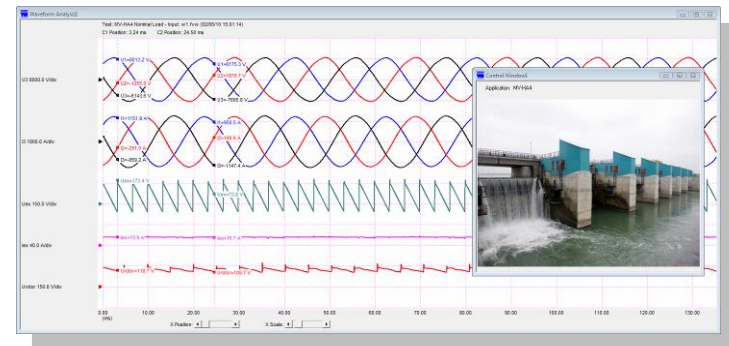


*Diagnoza rulmentilor bazata pe analiza
anvelopei vibratiilor, benzi multiple
pentru procesarea selectiva a
frceventelor de rezonanta*

FASTVIEW

acquisition, analysis
and diagnostic software

- Analiza parametrilor electrici in CC sau CA, monofazat sau trifazat, spectre de tensiuni, curenti, puteri active si reactive
- Analiza componentelor directa, inversa si homopolara



*Analiza tensiunilor, curentilor si puterilor in
domeniile timp si frecventa*

DIGITLINE

www.digitline.ro